

EaseUS® Todo Backup Reviewer's Guide



Reviewer's Guide

Contents

Introduction.....	2
Chapter 1.....	3
What is EaseUS Todo Backup ?.....	3
Versions Comparison.....	4
Chapter 2.....	7
Using EaseUS Todo Backup	7
Backup.....	7
Recovery.....	9
Scheduled Backup.....	11
Clone	14
Snapshot.....	16
Chapter 3.....	20
Other Features	20
Chapter 4.....	22
Frequently Asked Questions about EaseUS Todo Backup	22
Hardware requirements	20
System requirements.....	20
Supported file systems & hard disk types	20
Chapter 5.....	21
About EaseUS	21
Technical Support.....	21
Contact Information.....	21



Introduction

This guide is designed for members of the media who will be evaluating EaseUS Todo Backup disk imaging, backup and recovery software. This guide will help you assess major features and benefits of the product and introduce you to key features. You also will learn what makes EaseUS Todo Backup such an easy to use backup and restore product for protecting your precious data.

Chapter 1

What is EaseUS Todo Backup?

EaseUS Todo Backup is comprehensive backup software, which not only provides convenient user-interface to simplify your tasks but also enables you to backup and restore an image of your partitions or entire hard disk and important files.

EaseUS Todo Backup enables users to reproduce the saved state of the files, partitions or entire hard disk. Through the use of backup operation, users expect to retain their state of preservation of the files, whole hard disk or partitions, and then through the restore operation, the saved state of the files, partitions or entire hard disk can be zoning restored to its state of preservation at the prior time point. Snapshot can be scheduled to quickly restore to the preserved system state.

EaseUS Todo Backup also allows users to clone a hard disk, in order to replace the old one or transfer to another one.

Key Advantages of Using EaseUS Todo Backup

- It is **fast and efficient** for full, incremental & differential backup to create the image of your disk/partitions and your important files.
- **One-click system backup & recovery solution.** Easy one step to perform system backup & recovery or full back up operating system, hard drive, partition, files & folders and applications, and instantly recover all to ensure business continuity.
- **One-click to recover system** to dissimilar hardware configuration for hardware replacement.
- **Exchange/SQL Server database backup & recovery solution.** Fast and reliable backup and disaster recovery solution to full protect your Exchange/SQL Server database.
- **Scheduled backup** allows you to automatically perform backup tasks according to scheduled time or events.
- **Clone Drive** duplicates one hard disk to another. It can save you much time by eliminating the need to re-install the operating system, drivers and applications.
- **Snapshot** can save you from a catastrophic system crash, improve system availability and safety.

Versions Comparison

Features	Functions	Workstation	Server	Advanced Server	Technician	
Backup	One-click system backup	√	√	√	√	
	File backup	√	√	√	√	
	Disk and partition backup	√	√	√	√	
	Incremental file backup	√	√	√	√	
	Incremental disk/ partition backup	√	√	√	√	
	Differential file backup	√	√	√	√	
	Differential disk and partition backup	√	√	√	√	
	Backup network shared files	√	√	√	√	
	Schedule backup	√	√	√	√	
	Backup Exchange Server	-	-	√	√	
	Backup SQL Server	-	-	√	√	
	Event-based backup	√	√	√	√	
	Sector-by-sector backup	√	√	√	√	
	Backup to CD/DVD, FTP server	√	√	√	√	
	Manually add NAS as destination	√	√	√	√	
	Delete old images	√	√	√	√	
	Backup to tape	-	√	√	√	
	Backup files/partition in Windows Explorer	√	√	√	√	
	Recovery	File recovery	√	√	√	√
		Disk and partition recovery	√	√	√	√
Sector-by-sector recovery		√	√	√	√	
Restore system to dissimilar hardware		√	√	√	√	

	Exchange Server recovery	-	-	√	√
	SQL Server recovery	-	-	√	√
	One-click system recovery	√	√	√	√
	Explore image in Windows Explorer	√	√	√	√
	Recover image in Windows Explorer	√	√	√	√
System snapshot	Backup system with snapshot	√	-	-	-
	Recovery system with snapshot	√	-	-	-
Backup management	Edit, View, Delete backup task/plan	√	√	√	√
	Update backup	√	√	√	√
	P2V image files convert	√	√	√	√
Backup options	Compression	√	√	√	√
	Password protection	√	√	√	√
	Image splitting	√	√	√	√
	Priority	√	√	√	√
	Offsite copy	√	√	√	√
	E-mail notification	√	√	√	√
	Pre/Post commands	√	√	√	√
	Network transfer speed	√	√	√	√
Tools	Check image integrity	√	√	√	√
	Disk/Partition clone	√	√	√	√
	Wipe disk/partition	√	√	√	√
	Mount/Unmount image	√	√	√	√
	Remote console	√	√	√	√
	Fix MBR	√	√	√	√
	Check partition	√	√	√	√
	Add driver	√	√	√	√

	Map network drive	√	√	√	√
Others	For home users	√	√	√	√
	For business users	√	√	√	√
	Support Windows 2000/XP/Vista/7/8	√	√	√	√
	Support Windows Server 2000/2003/2008/8 Beta	-	-	√	√
	Support FAT, NTFS file system	√	√	√	√
	Support hardware RAID & dynamic disk	√	√	√	√
	Support GPT disk	√	√	√	√
	Linux based bootable disk	-	-	-	-
	Support USB 3.0 in WinPE based bootable disk	√	√	√	√
	Add common RAID controller driver in WinPE environment	√	√	√	√
	Pre-OS recovery environment	√	√	√	√
	Command shell	√	√	√	√
	Log	√	√	√	√
	Free Email support	√	√	√	√
	Support Priority	Medium	Medium	High	High
	License	Single license	Single license	Single license	Technician license
	Price	\$39.00	\$199.00	\$299.00	\$999.00

Chapter 2

Using EaseUS Todo Backup

Backup

EaseUS Todo Backup can make copies of data so that these copies can be used to restore to the original state in case of computer disaster or any unexpected troubles. You can easily back up your whole disk or the partitions and files to an image by this product.

For disk/partitions backup, not only the data partitions can be backed up, but also the system partition. You can perform the operations directly under Windows, while other applications in the disk/partitions are still running.

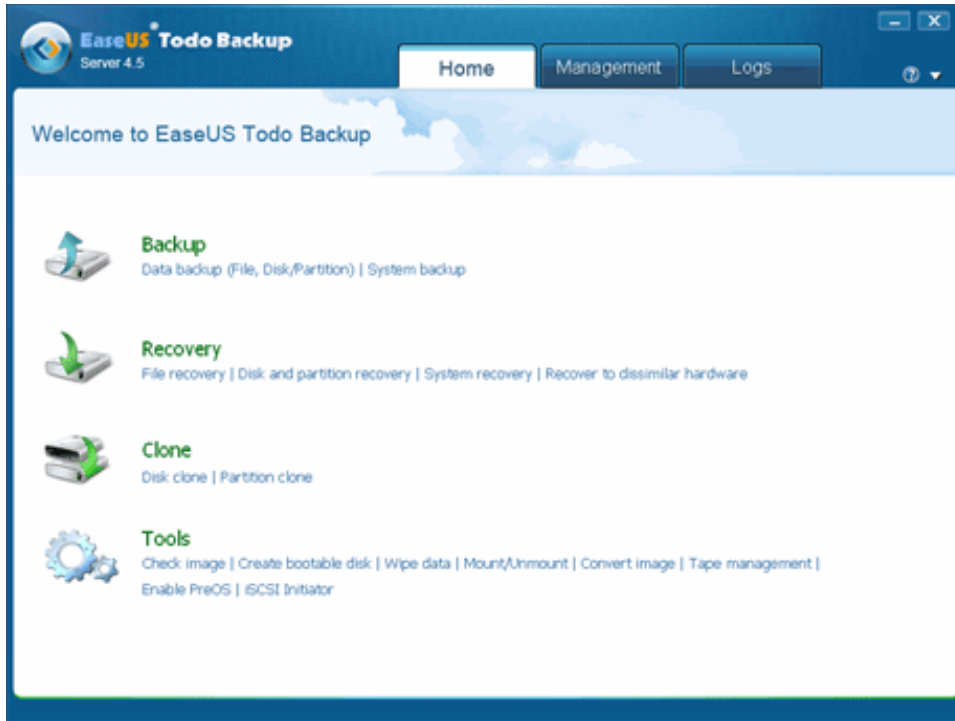
For file backup, this product can keep all information related to files, including file content, file name, file attribute and even the folder structure.

And an important feature in EaseUS Todo Backup is the ability to make partition and file incremental backup. Once you create a full backup of the partitions or files, you only need to image changed data during an incremental backup. This process is much faster than image all files once again.

How to perform a disk/partitions backup:

1. Launch EaseUS Todo Backup.
2. Click Backup and select Disk and partition backup.
3. Select "New disk and partition backup", or tick "Incremental disk and partition backup" or "Differential disk and partition backup" if you have already backed up. Enter a name and description for the backup task.
4. Select the partition or hard disk from the disk list. (If you do incremental backup or differential backup, just select one image file from the list, and click Proceed to finish the backup.)
5. Select the path to save the backup image. You can also tick "Check backup image integrity after backup" option and set advanced settings in "Options", such as backup priority, compression and so on.
6. Set to run backup immediately or later:
7. Confirm your backup information.
8. Click Proceed.

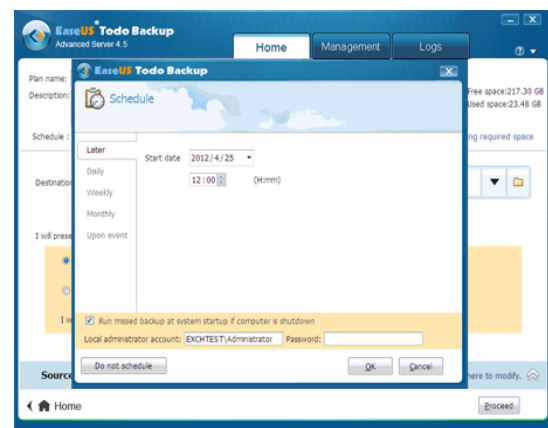
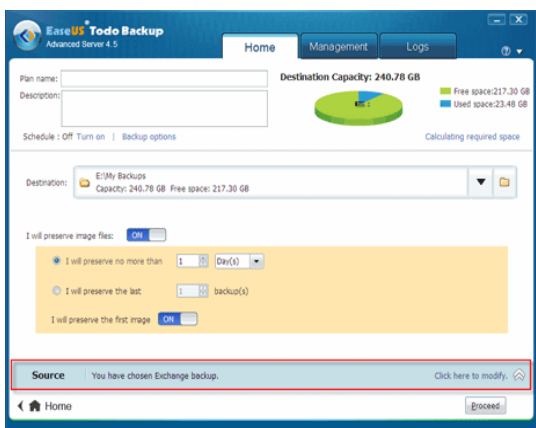
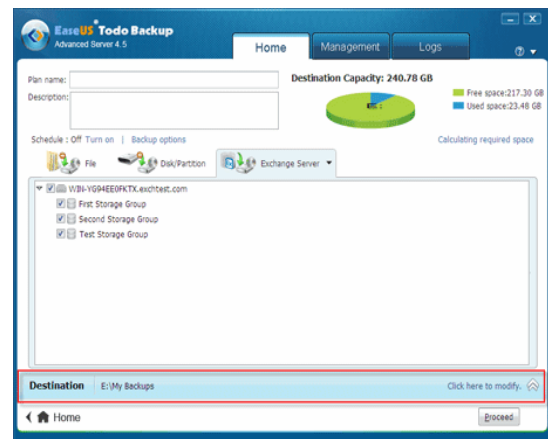
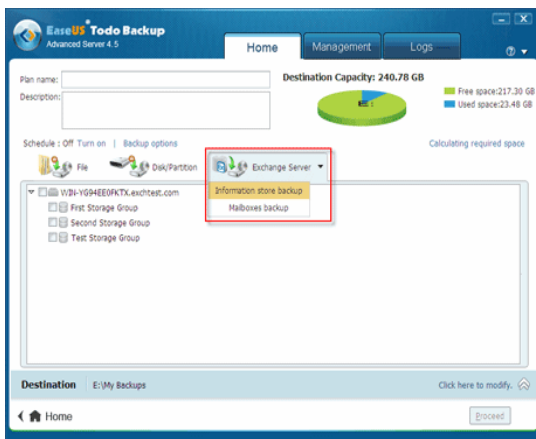
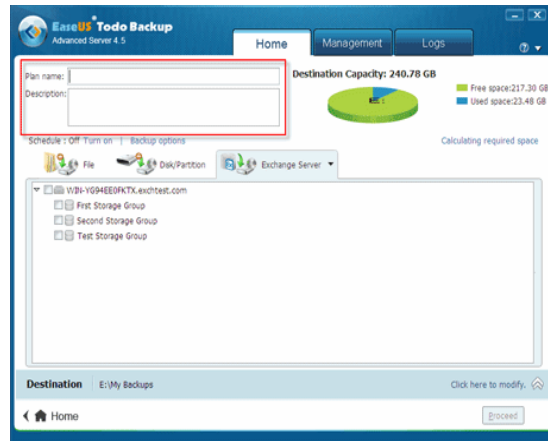
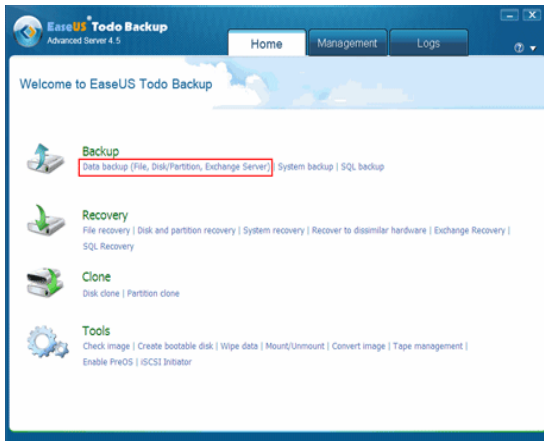
Screenshots:

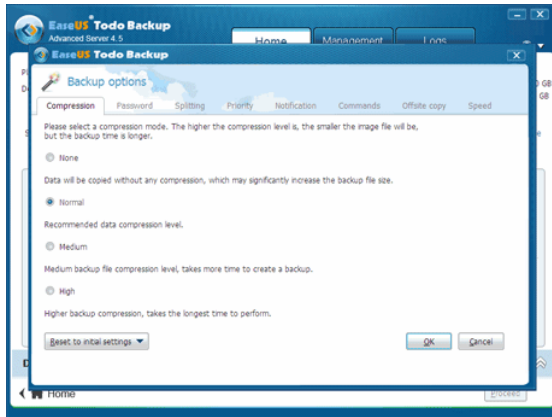


How to perform Exchange Server database backup

1. Launch EaseUS Todo Backup.
2. Select Backup and click Exchange backup.
3. Select New Exchange backup.
4. Select Exchange object to backup.
5. Select backup destination.
6. To backup now or set a backup schedule to backup later.
7. Confirm backup information and click Proceed to execute backup task.

Screenshots:





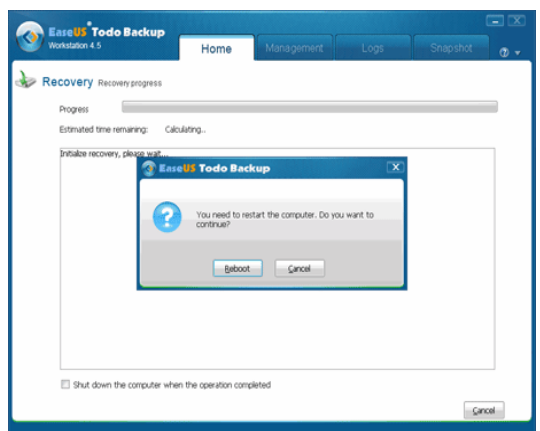
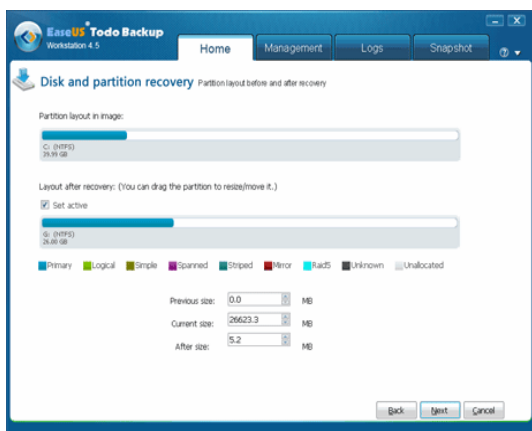
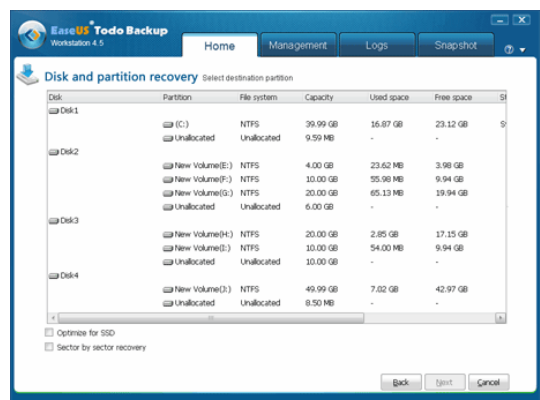
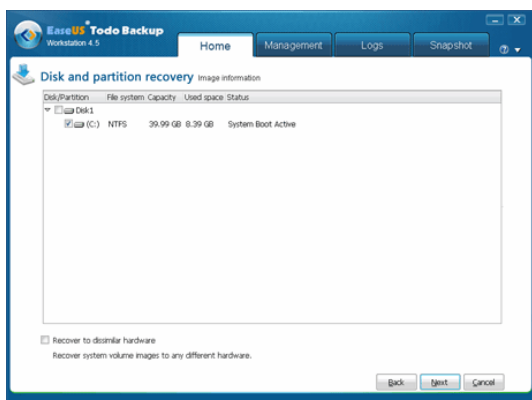
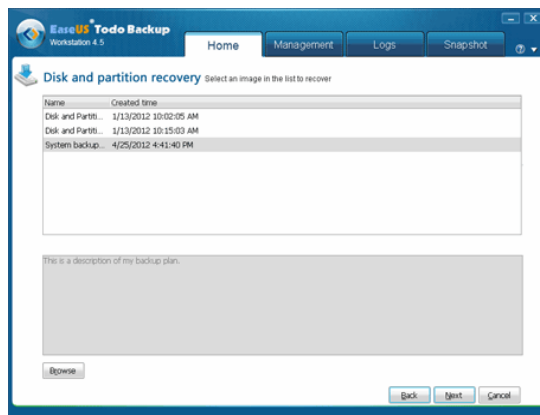
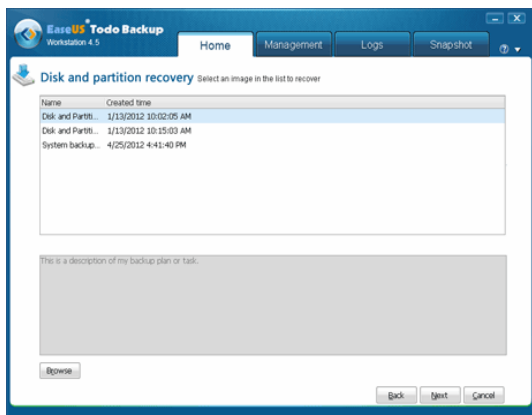
Recovery

With this function, you can get your computer back to a healthy state from which you can help yourself extricate from a variety of computer disaster, such as virus infection, system crash, partition lost etc. As long as you have an image file which is a backup of your healthy computer, then all the troubles can be removed easily. There are two functions in this page, **File recovery** and **Disk and partition recovery**. You can choose the corresponding recovery method according to your requirement.

How to restore disk/partitions from the image:

Restore partition(s) on one disk

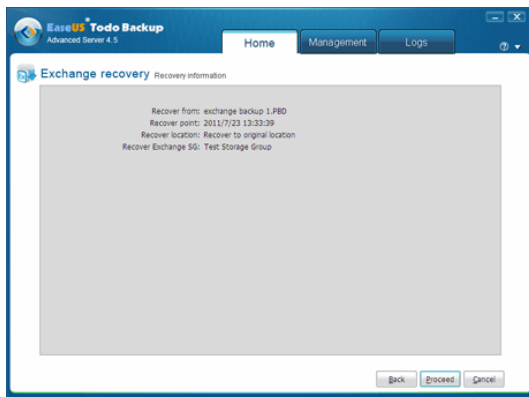
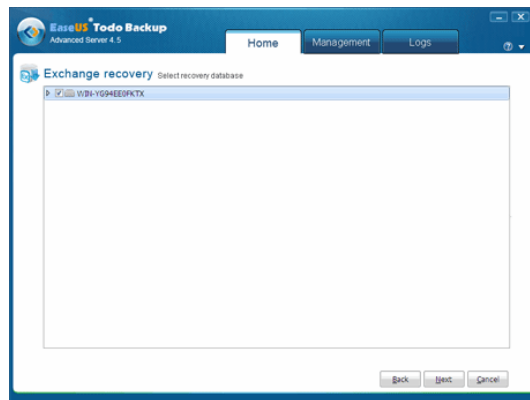
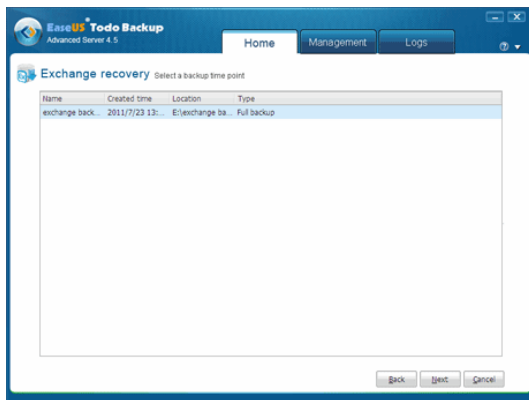
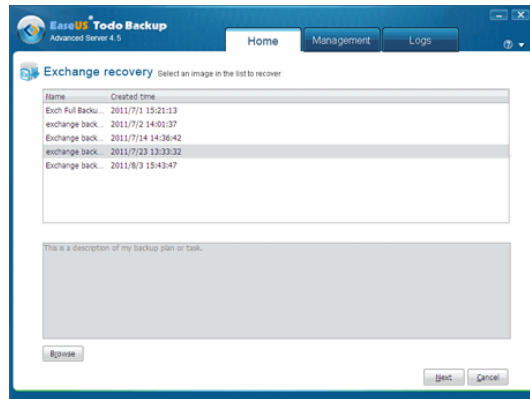
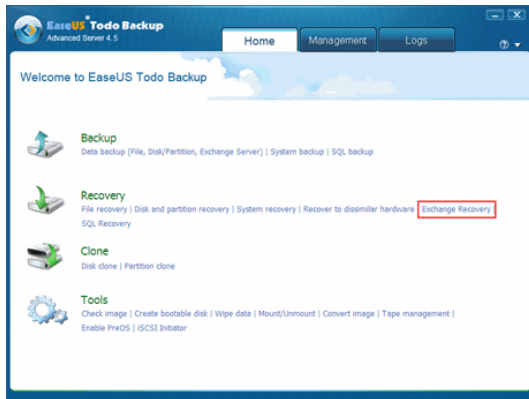
1. Launch EaseUS Todo Backup.
2. Select Recovery and click Disk and partition recovery.
3. Select a backup task to restore (you can identify the task by Description). Or locate the task manually by clicking Browse button.
4. Select the image file version you want restore. The Created time can help you find the time point you want to restore.
5. Select partition(s) you want to restore.
6. Follow the wizard to finish recovery.



How to restore Exchange Server Database

1. Launch EaseUS Todo Backup and click Recovery, select Exchange recovery.
2. Select an image in the list to recover, or browse to locate the image file on your computer.
3. Select a backup time point.
4. Select recovery database.
5. Confirm recovery information and click Proceed to execute recovery task.

Screenshots:



Schedule Backup

Disk and partition backup schedule

1. Launch EaseUS Todo Backup, and select "Backup" and click Disk and partition backup.
2. Select New disk and partition backup.
3. Select the partition you want to backup from the disk list.
4. Select the destination to save the backup image.

If you need to check the backup image, you can tick "Check backup image integrity after backup".

5. Options:

- Compression: Choose compression mode, None, Normal, Medium, and High;
- Password: Set the password for the image, No encryption, AES 128, AES 192, and AES 256.
- Splitting: Select a model to split a large image file into smaller files, Automatic and Manual.
- Priority: Select the backup priority level, Normal, Medium, and High.
- Notification: Add an e-mail address to notify you when your backup process has finished.
- Commands: Set custom commands, Pre-command and Post-command.
- Offsite copy: Enable or Disable offsite copy.
- Speed: Limit transfer rate.

6. Set backup schedule.

Now - current backup task will be executed immediately.

Later - specify an exact time in future to execute the backup task.

Daily - set a certain time or interval of a day to perform the scheduled task every day.

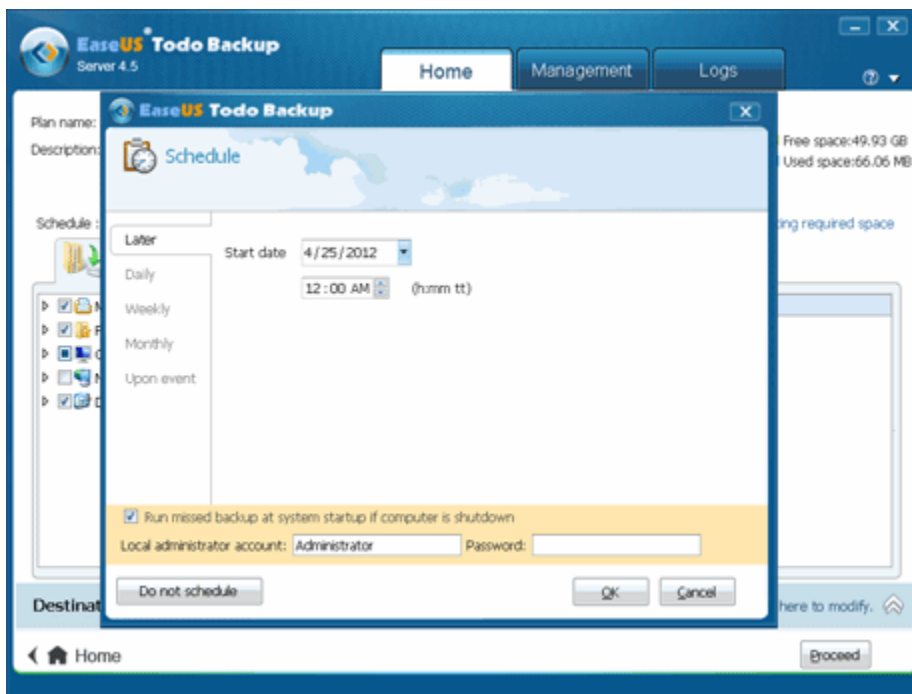
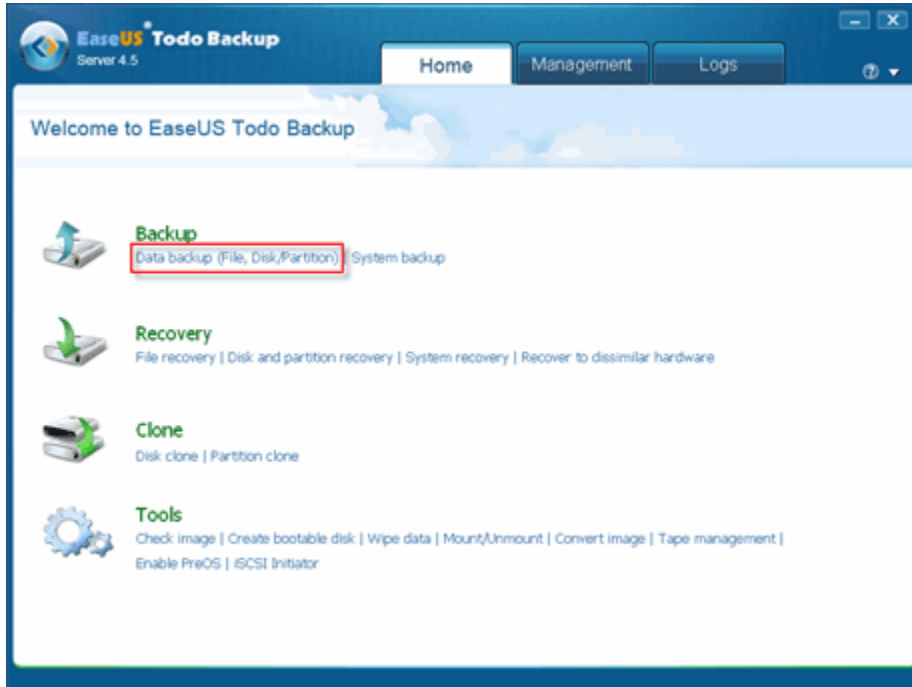
Weekly - run the backup task at specified time of every week.

Monthly - run backup task at the specified time of every month.

Upon event - Execute the backup based on specified event including system startup, system shutdown, user log on or user log off.

7. Confirm your backup schedule information and click "OK".

Screenshots:



Clone

This function allows you to make a duplicate of the selected hard disk or partition. Compared with backup task, there will be a duplication hard disk or partition generated instead of generating an image file after the operation. And you can directly use the duplication without recovery task.

Clone Drive duplicates one hard disk to another. It eliminates the need to re-install the operating system, drivers and applications, and enables you to upgrade a new hard drive with only a few mouse clicks. For a successful copy process, please make sure the capacity of destination hard disk is equal or larger than the used space on source hard disk.

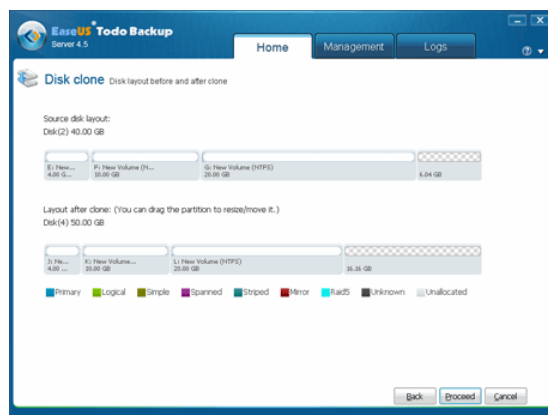
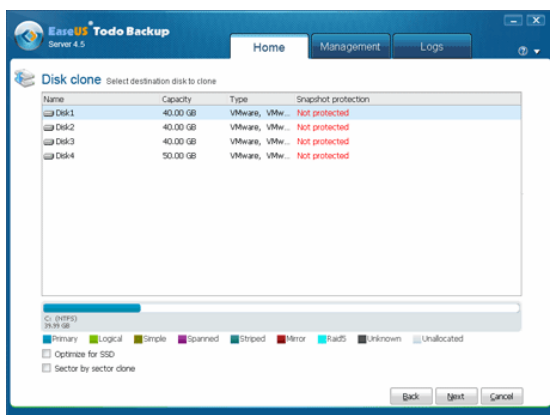
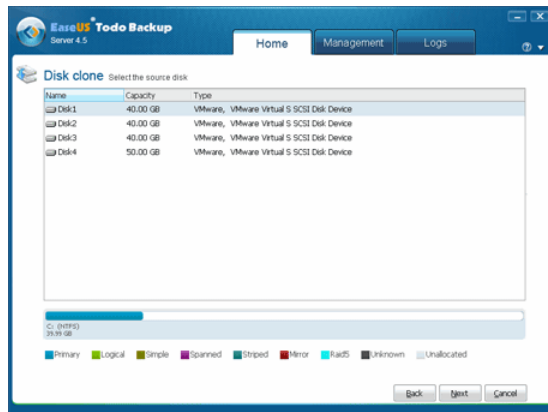
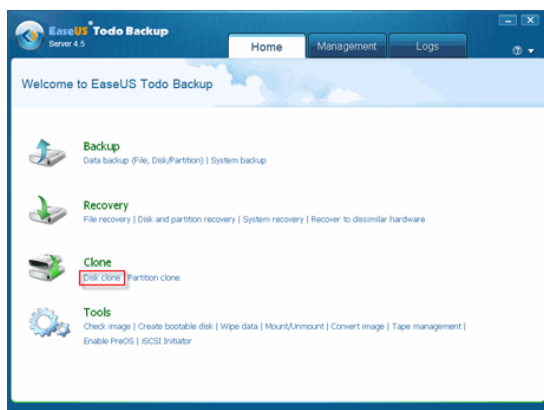
How to perform the disk clone:

1. Prepare a destination disk to be written first. Launch EaseUS Todo Backup and click Disk clone.
2. Select source disk you want to clone.
3. Select the destination disk. "Sector by sector clone" option enables you to clone all sectors from source disk to destination disk.
4. Preview the disk layout after cloning.
5. Click Proceed to execute cloning.

Tips:

- 1. If the source disk contains the system partition, please shut down the computer after the clone.
- 2. To remove either the source disk or destination disk from the computer to make the computer boot normally if the source disk contains boot partition.
- 3. If you want to boot from the destination disk, we recommend you to replace the source disk with the destination disk.
- 4. If the computer fails to boot from the destination disk after the clone, we suggest you clone the source disk to another disk with the same HDD interface.
- 5. If you choose to clone a hidden partition, the cloned one will be unhidden.

Screenshots:



Snapshot

In computer systems, a snapshot is the state of a system at a particular time point. This allows you to test a new deployment. If things go wrong, 'Roll-Back' the computer to the Time/Date the Snapshot was taken. Snapshot has been designed to simplify and automate backup, recovery and disaster recovery processes, improving system availability.

System Snapshot and Hard Drive Imaging are both system backup methods. But the amount of storage capacity required for each snapshot is substantially less than the entire amount of data on the hard drive. As a result, compared with hard drive imaging or complete disk cloning methods, snapshot offers a significant saving of hard drive space and an increased restoration speed.

To create a system snapshot:

1. Launch EaseUS Todo Backup.
2. Select Snapshot.

If this is the first time you backup system state with snapshot, please enable snapshot before backup.

3. Click Create and then enter the information to create a new system snapshot.
4. Click OK to start system state backup.

You may not be able to see the snapshot files in your computer as they are hidden files. To hide the files is to protect the snapshot files from damage or virus infection or some other possible troubles, and they are harmless to your computer.

If your hard disk is not too small, we recommend you to keep the default disk space size.

Once the first snapshot enabled, you can create new snapshots by simply clicking **Create** in the snapshot management window. Compared to backup feature, you don't need to select a location where to store the snapshot files, it will automatically written to the file you created, and rebooting computer is not necessary if you just try to create a new snapshot.

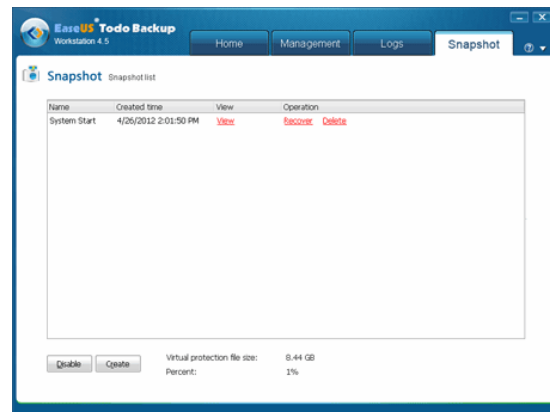
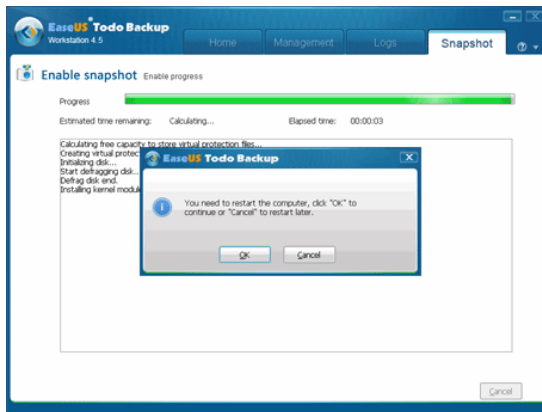
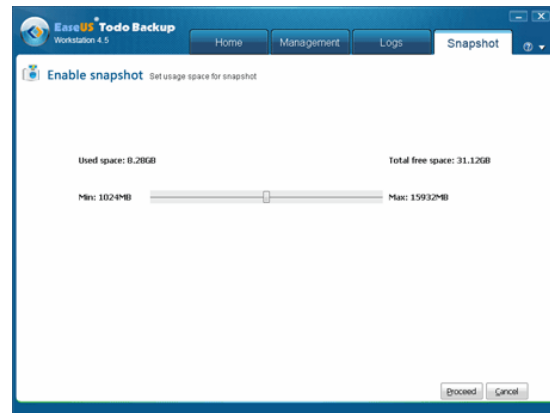
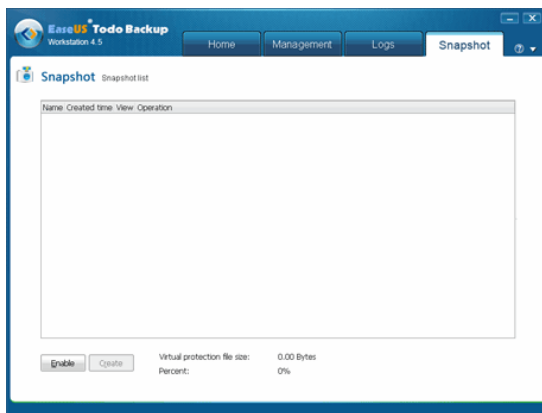
In addition, the partition or the hard disk which contains the snapshot VPN file will be displayed as **Protected** in particular steps of some wizards in our product. In order to protect the VPN file, it is not allowed to write to the marked partition or hard disk, which means you can back up or clone the protected partition or hard disk, but you cannot recovery or clone to it.

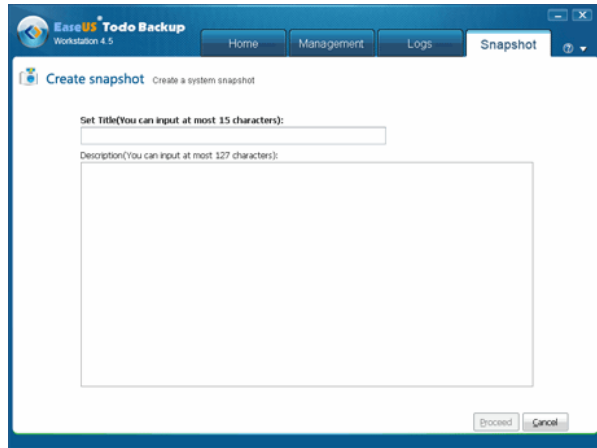
To restore system from snapshot:

1. Launch EaseUS Todo Backup.
2. Select Snapshot.

3. Select a snapshot from snapshot list and then click Recover.
4. Select a restore point according to its created time.
5. Click OK to reboot and restore system from snapshot point.

Screenshots:





Chapter 3

Other Features

Backup management: All backup tasks are listed here; including the task finished or still scheduled. What's more, you just need to right click your mouse to perform the function listed here.

P2V image files convert support: Convert hard disk or partition image file to VMware or virtual PC format to run on a virtual machine.

Explore backup image file to restore at a granular level: Explore, copy and restore files and folders directly from a backup image in Windows Explorer.

Delete old images: automatically delete/overwrite old images based on versions or days to save disk space according to your own time-setting.

One-click universal restore: This function allows you to restore a system partition after some hardware changed or restore to another computer with different hardware configuration.

Check image: You can check the integrity of backup image file by this function.

Bootable media builder: This function allows you to create an emergency disk. It will be especially useful when your system failed to boot. To create a bootable disk, a blank CD/DVD-R/RW or an USB flash disk/USB external hard disk is required.

Disk tools: Disk tools include Disk clone, Partition clone, Wipe data and iSCSI Initiator.

Mount image: You can preview the content of the specified partition from a complete backup image and copy individual files to a hard disk by this function.

Compression: The backup file can be compressed in different levels.

Password protection: A backup file can be protected with a password with three encryption algorithms, which is AES 128 192 256.

Splitting: To fit the size of the different storage medium, the image file can be split into several files.

Priority: You can set up the backup process priority in Windows.

Email notification: This product can send an E-mail to inform you that your operation is successful or failed after the scheduled operation is finished.

Commands: You can write specific Windows command files and browse the files to the list shown in our products or a single command. EaseUS Todo Backup will execute the command automatically before or after the current backup task at your request.

Offsite copy: Create a copy of the backup image onto FTP server.

Speed Limit: Set the network transmit speed limit.

Log: The log file records not only the executed tasks names and operation, but also the errors or warnings encountered during operations.

Pre-OS: Pre-OS can rescue you from any unexpected system failures. This feature will be available after you enable Snapshot at the first time.

Chapter 4

Frequently Asked Questions about EaseUS Todo Backup

Q: Why does the system prompt more than one image needed to be deleted when I just want to delete one image file?

A: If you have some incremental image files based on the one which you want to delete, and then all the incremental image files will be deleted at the same time.

Q: Why cannot I change the destination path of scheduled backup to my CD/DVD burner?

A: Sorry, our product cannot support invoking CD/DVD burner while you change the path of scheduled backup. If you originally set a CD/DVD burner for a scheduled backup, to change it to another path is not allowed either. We will improve this regard in next version.

Q: Why do I need to input a username and password when creating a scheduled backup?

A: Our product can only create backup plan with the permission of administrator, so you need to input the username, and a valid password is also needed.

Q: Can I execute an incremental backup without any full backup created before?

A: No, an incremental backup is based on a full backup. There must be a successful full backup before you do the incremental backup.

Q: Can I create an incremental backup if nothing has changed?

A: Yes, this is allowed, but a full backup is always in demand before an incremental backup.

Q: Whether the process can be operational if the capacity of the destination path is insufficient after several incremental backups executed?

A: No. Our product will always detect the destination path automatically. If available space is not enough to hold another incremental image file, our product will give you a warning and ask you to remove some unimportant files to ensure sufficient space for backup.

Q: Can I clone hidden partition or a partition without driver letter?

A: Yes, our product can clone these two kinds of partitions.

Q: Why does the NTFS partition displayed as RAW after clone and I cannot access to it?

A: The original NTFS partition has written-protect, please remove the attribute and try again.

Q: Why is there always a folder generated as the same name with the image file after backup?

A: In order to help users to identify where the image file is stored, our product automatically generates a folder with the same name of the image file. The image files will be easily found in such a folder when you have a significant amount of image files.

Q: Can I modify image name or move the path under Windows Explorer or with other tools?

A: Sorry, our product can only do these operations with our product itself for now, in order to avoid any unexpected problems occurring, please never ever try to do these operations.

Hardware requirements

EaseUS Todo Backup requires a computer with at least X86 or compatible CPU with main frequency 500 MHz, a standard PC system with mouse, keyboard and color monitor, and the capability of the RAM memory equal or larger than 1GB, CD-R/RW, DVD-R/RW, DVD+R/RW or DVD+R DL drive for bootable media creation.

System requirements

EaseUS Todo Backup provides support of the following operating systems: Windows 2000 SP4, Windows XP, Windows Vista, Windows Server 2000/2003/2008 and Windows 7. *Please note that the Home, Professional, Workstation and Advanced Workstation version cannot support all server operating systems. You can refer to versions comparison for more details.*

Supported file systems & hard disk types

EaseUS Todo Backup supports the following file systems: FAT12, FAT16, FAT32 and NTFS. IDE, EIDE, SATA, ESATA, ATA, SCSI, iSCSI, USB disk, and Firewire disk are all supported by EaseUS Todo Backup. The smallest capability is 2 GB and the largest is 2TB. EaseUS Todo Backup can support 32 disks at most.

Backing up to CD-R/RW DVD-R/RW DVD+R/RW DVD+R DL is also supported.

Most features of EaseUS Todo Backup does not support dynamic and GPT disks except File backup.

Chapter 5

About EaseUS

EaseUS, located in China and America, is a leading provider of storage management and data recovery solutions for millions of private and business users in more than 180 countries and areas. With years of experience, EaseUS software and service have been one of the pioneers in these fields.

Technical Support

For more information about EaseUS Todo Backup, please visit our website:

<http://www.todo-backup.com>

If you still cannot find what you are looking for and need further assistance, we encourage you to contact EaseUS Technical Support by support@todo-backup.com.

Contact Information

Sales Contact: sales@easeus.com

Product Support: support@todo-backup.com

Media Contact: media@easeus.com

.....The End.....